



Solis Maestro Grinder Operating Instructions

Lid

Bean Hopper

Grind Control

Microswitch

Ground Coffee Bin

Time/Quantity



IMPORTANT SAFEGUARDS - CAUTION

When using electrical appliances, basic safety precautions must be followed, including the following:

1. Be sure you read and understand all instructions, safeguards, and warnings before operating your grinder.
2. Always turn appliance OFF before plugging in or removing power cord from wall outlet.
3. This machine is not for commercial use. It was designed to process normal household quantities only. It is not suitable for continuous operation.
4. Do not let the cord hang over the edge of the table or counter or touch hot surfaces.
5. Do not leave your grinder unattended while turned ON.
6. Do not use outdoors.
7. Children should not use this machine. Keep your grinder out of reach of children.
8. Use your Baratza Solis Maestro Grinder only on alternating current (AC). Be certain the machine is connected only to a power source with the voltage that is specified on the rating plate located on the underside of the appliance (120 volts).
9. Disassemble your grinder only as directed in the Cleaning section of this manual. If you cannot remedy a malfunction call Baratza at 877-701-2020 to arrange for repair. Do not remove screws and do not attempt internal repairs.
10. Do not use appliance for anything other than its intended use.

SAVE THESE INSTRUCTIONS - WARNINGS

To avoid electric shock:

- Keep your grinder out of reach of children.
- Do not immerse the appliance, plug, or cord in water or any other liquid.
- Do not run water or any other liquid over the machine body.
- Do not operate your grinder with a damaged cord or plug or if the appliance malfunctions.
- Shut off and unplug machine from the electrical outlet when not in use and before cleaning. To unplug, grasp plug and remove from the outlet—never pull on cord.
- Use only 120 volt current.
- Do not use attachments or parts not included or approved for use with this machine as they may cause fire, electric shock or other injury.

To otherwise avoid injury:

- Do not place grinder on or near a hot gas or electric burner, or in a heated oven. Keep appliance from direct contact with steam.
- Do not use your grinder if it has been dropped or damaged.
- Moving parts can cut and crush. Never operate the grinder with the bean hopper removed. Keep hands away from the grinding burrs while the machine is in use.
- Always unplug the grinder before cleaning.

SHORT CORD INSTRUCTIONS

A short power supply cord is provided to reduce your risk of tripping over or otherwise becoming entangled with a longer cord. Longer extension cords are available and may be utilized if care is exercised in their use. If an extension cord is used:

- The marked electrical rating of the extension cord should be at least as great as the electrical rating of the appliance (120 volts).
- The longer cord should be arranged so that it will not drape over the counter or table-top, where it may be pulled on by children or accidentally tripped over.



Operating Instructions

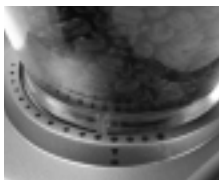
Initial Operation

Place the Maestro Grinder on a level surface. Unreel the required length of cord and insert the plug into the outlet. Remove the lid from the hopper by lifting it off. Place the desired quantity of coffee beans into the hopper up to a maximum of 8 oz. Replace the lid.



Setting the Grind Control

Note: If the grinder has been filled with coffee beans, the grinding control must only be operated when the motor is running.

Slowly rotate the bean hopper clockwise or counterclockwise to the desired setting. With use, you will find the most suitable settings for your own taste. The following symbols can be used as a guide for adjusting the grind.



Adjust the degree of grind from:

- | | | |
|---|--------------|-------------|
| ● Smallest (far left) | Turkish | ultra-fine* |
|  | Espresso | fine |
|  | Drip | medium |
| ● Largest (far right) | French Press | coarse |

*This setting is too fine for espresso, may log porta-filter.

Quantity Control



The Maestro grinder is equipped with a time control knob for ease of repeatable grinding time and coffee quantity. Use it to set the coffee grinder to the desired grinding time and quantity. The grinder switches off automatically once the preset time has elapsed. If you want to interrupt grinding before the preset time has elapsed, simply turn the rotary knob back to the left until the grinder switches off.

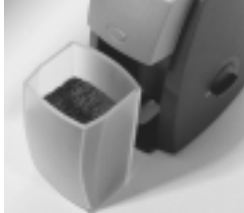
The quantity of ground coffee you need to make your coffee depends on the type of bean, coarseness of the grind, and personal taste. With use, you will find the most suitable settings for your own taste.

Front-mounted Microswitch



Push in button and hold to grind. The machine will grind as long as you depress the button. The grinder shuts off when you release the button.

Ground Coffee Bin



Coffee can be ground into the coffee bin or directly into coffee filters or espresso porta-filters.

Cleaning



Check and clean periodically (depending on bean type). Switch grinder off and remove the plug from the power supply. Remove any remaining beans in the bean container. Remove the hopper by twisting it in a counterclockwise direction as far as it will turn. Lift the bean hopper from the housing. The grinding ring burr can then be lifted out of the machine. A soft-bristle brush is ideal



for cleaning the grinding ring burr. Re-assemble the machine by performing the above operation in reverse order. Housing and transparent parts can be cleaned easily using a damp cloth. Do not immerse the grinder in water.

Warranty and Service (US only)

Warranty: One-year parts and labor on materials and workmanship. For any repairs or spare parts contact



Baratza LLC
3923-120th Ave. S.E.
Bellevue, WA. 98006
877-701-2020
e-mail: service@baratza.com